

User's Manual

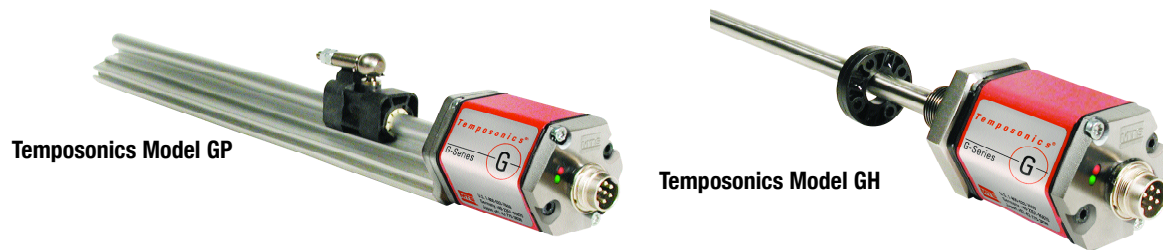
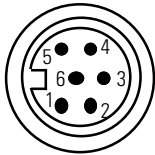
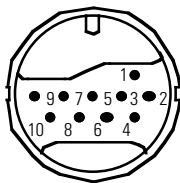


Figure 1 - G-Series Connector Pin-Outs



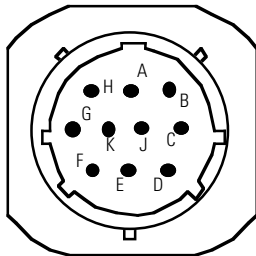
Integral Connector (D6 Male)
(As viewed from end of sensor)

Option D60



In-line RB connector

Option RB _



In-line MS connector

Option FM _

Connection Options

Temposonics G-Series sensors are preconfigured at the factory by model code designation. If needed, a variety of retrofit and replacement options are available to provide direct backwards compatibility for your application.

G-Series sensor connection options:

- Integral 6-pin DIN male connector, (option "D60")
- Integral cable with pigtail end, standard type (option "R _"), and heavy duty type (option "F _")
- Integral cable with in-line RB type male connector (option "RB _")
- Integral cable with in-line MS type male connector (option "FM _")

Depending on the sensor output selected (Analog, Digital Pulse, or Neuter) the different wiring required for the applicable combinations are shown in *Tables 1-3*. Pin-outs for the above connector types are illustrated in *Figure 1*.

Notices used in this user's manual

Notes:

These notices provide important tips, guidance or advice.

Important:

These notices provide information that might help you avoid inconvenient or problem situations.

Caution:

These notices indicate situations that can be potentially hazardous to you. A caution notice is placed just before a description of a potentially hazardous procedure, step or situation.

G-Series Wiring/Connections

Table 1 - Analog Output Connections (Voltage or Current)

Integral cable wire color R__ or F__	Integral connector D60 pin no.	In-line connector RB__ pin no.	In-line connector FM__ pin no.	Function (Note 1)
Gray	1	4	D	0 to 10, -10 to +10 Vdc, or 4 to 20 mA, 0 to 20 mA or reverse acting (note 2): 10 to 0, +10 to -10 Vdc, or 20 to 4 mA, 20 to 0 mA
Pink	2	3	C	Return for pin 1
Yellow	3	7	G	Programming (RS-485 +)
Green	4	8	H	Programming (RS-485 -)
Red or Brown	5	5	E	Supply voltage (+Vdc)
White	6	1	A	DC ground (for supply)
---	---	2	B	No connection
---	---	6	F	No connection
---	---	9	J	No connection
---	---	10	K	No connection

Notes:

1. The format used to show the voltage and current output range is: [Value at Null (Setpoint 1)] to [Value at Span (Setpoint 2)]. Not all of the available outputs ranges for voltage are shown.
2. If the G-Series sensor is replacing a L-Series sensor where the reverse acting outputs are being used then the wire connections must be changed at the controller. Refer to G-Series Cross Reference, part no. 550967 for details.

Table 2 - Digital Pulse Output Connections (Start/Stop or PWM)

Integral cable wire color R__ or F__	Integral connector D60 pin no.	In-line connector RB__ pin no.	In-line connector FM__ pin no.	Function
Gray	1	3	C	(-) Gate for PWM (-) Stop for Start/Stop, or Programming (RS-422 TX -)
Pink	2	4 (and 8)	D	(+) Gate for PWM (+) Stop for Start/Stop, or Programming (RS-422 TX +)
Yellow	3	9	J	(+) Interrogation for PWM (see note) (+) Start for Start/Stop, or Programming (RS-422 RX +)
Green	4	10	K	(-) Interrogation for PWM (see note) (-) Start for Start/Stop, or Programming (RS-422 RX -)
Red or Brown	5	5	E	Supply voltage (+Vdc)
White	6	1	A	DC ground (for supply)
---	---	2	B	No connection
---	---	6	F	No connection
---	---	7	G	No connection
---	---	---	H	No connection

Note:

When using PWM output with internal interrogation both of the interrogation input signals are not used, and can be left unconnected or connected to ground.

Table 3 - Square Wave Neuter Output Connections

The G-Series square wave neuter output is provided for backwards compatibility to replace Tempo I, Tempo II, and L-Series sensors. These sensors have the neuter output option for connection to the Analog Output Module (AOM), Digital Interface Box (DIB), or to custom interfaces/controllers. Reference the G-Series Cross Reference, part no. 550967, for additional neuter output connection information, including adapter cables and field-installed connectors.

Integral cable wire color R__ or F__	Integral connector D60 pin no.	In-line connector RB__ pin No.	Function (see note 1)
Gray	1	3	(-) Stop (note 2), or Programming (RS-422 TX -)
Pink	2	8 (and 4)	(+) Stop (Compatible Neuter Output Pulse), or Programming (RS-422 TX +)
Yellow	3	9	(+) Start (note 3, 4), or Programming (RS-422 RX +)
Green	4	10	(-) Start (note 3, 4), or Programming (RS-422 RX -)
Red or Brown	5	5	Supply voltage (+Vdc)
White	6	1	DC ground (for supply)
---	---	2	No connection
---	---	6	No connection
---	---	7 (note 5)	No connection

Notes:

1. The "(+) Stop" output is used for a compatible square wave neuter signal.
2. The G-Series output signal, "(-) Stop" is not used when providing the backwards-compatible neuter type connection. However, this signal wire / connector pin is used for "RS-422 TX-" during serial programming of the sensor. When the sensor output is active, (not in programming mode), this signal must be left unconnected to allow the proper neuter type output.
3. When connecting to an Analog Output Module (AOM), or to a Digital Interface Box (DIB), or to a custom interface/controller that requires single-ended interrogation, always connect the unused interrogation lead, "(+) Start" or "(-) Start", to ground at the AOM/DIB/Controller.
4. For improved noise rejection when using external interrogation use the positive and negative interrogation signals, "(+) Start" and "(-) Start", to provide differential inputs to the sensor.
5. If pin 7 was originally used as DC ground for the Tempo II or L-Series sensor being replaced then the DC ground connection at the controller must be changed to use pin 1.

Programming & Diagnostics

G-Series LED Diagnostic Codes

G-Series sensor red and green LEDs are intended to provide basic visual feedback for normal sensor operation and troubleshooting. These LEDs are located at the end of the sensor where the cable or connector is terminated. The green LED is used to indicate power applied and normal operation while the red LED is used to indicate programming mode operation and errors. See *Table 4* for normal operation and diagnostic LED codes.

Table 4 - G-Series LED Codes

Green	Red	Description
OFF	OFF	No power to sensor
OFF	ON	Self-diagnostic error
OFF	FLASHING	Infrared programming mode (PDA or IR setpoint programmer)
ON	OFF	Normal sensor function
ON	ON	Magnet not detected
ON	FLASHING	Missing (external) interrogation 1
FLASHING	OFF	Serial programming mode (PC setup software)
FLASHING	ON	Magnet signal weak 2
FLASHING	FLASHING	Power out of range (high or low) 3

Notes:

- 1 Missing (external) interrogation** - If the sensor is a Start/Stop or PWM output style, with external interrogation, then no interrogation signal has been received over the timeout period. Standard timeout is 0.5 seconds.
- 2 Magnet signal weak** - Sensor is still operating, but magnet placement should be corrected to assure continued operation. (May also indicate other problems that cause weak magnet return signals.)
- 3 Power out of range (high or low)** - Supply voltage is nearly beyond the acceptable limits. If voltage is low the sensor is still operating, but the supply voltage should be corrected to assure continued operation. If the voltage is high the sensor is still operating, but the sensor's over-voltage protection may engage, powering off the sensor temporarily. The over-voltage should be corrected to assure continued operation and avoid possible permanent damage.

G-Series External Programming and Diagnostics

Temposonics G-Series sensors are preconfigured at the factory by model code designation. In many applications, the G-Series field programming tools are not necessary to obtain the desired sensor operation. The three programming tools are described in *Table 5*.

Table 5 - G-Series Programming & Diagnostic Tools

Programming & diagnostic tool	Digital-pulse outputs		Analog output	
	Programming	Diagnostics	Programming	Diagnostics
PC setup software (part no. 625060)	Output parameters	Status variables	Output parameters	Status variables
PDA Palm OS software (part no. 625061)	Output parameters	Status variables	NA	NA
IR Setpoint programmer (part no. 380077)	NA	NA	Adjust null and span setpoints	NA

Caution:

Prior to initiating G-Series programming, it is critical that the user ensures that taking the sensor out of normal operating mode or modifying the sensor's operating parameters will not cause harm to the process utilizing the G-Series sensor feedback, nor to any persons associated.

Important Note:

Use of G-Series programming tools requires that users operate the sensors in one of the programming modes (serial or infrared) instead of the normal operational mode, (i.e. sensor providing position feedback). It is critical to understand that the user must **switch between** programming mode and normal operation mode – programming and normal operation cannot occur simultaneously. The only exception is that the G-Series Analog output sensor will still transmit its analog output over the output pins (wires) while in programming mode. This is necessary to enable users to adjust the analog null and span setpoints.

G-Series PC Setup Software

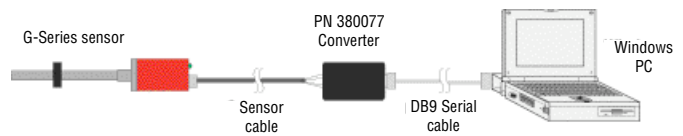
The G-Series PC setup software is intended to provide the most comprehensive sensor monitoring and programming user interface available for this product line. Using this program, it is possible to modify sensor parameters and view important diagnostic outputs. The Help file within the setup program contains details on program operation, sensor programming and diagnostic features.

Equipment needed:

- G-Series model sensor
- Windows PC with G-Series Setup software installed (see below)
- RS-232 to RS-422 or RS-485 serial interface converter (part no. 380077)
- Two AAA batteries for the serial interface converter
- Dual DB9 connector serial communication cable (male to female)
- Sensor power supply (+20.4 to +28.8 Vdc for sensor input voltage option 1, or +9 to +23 Vdc for option 2)
- Mating cable for sensor (if necessary)

The G-Series Setup program is installed by first running the **SETUP.EXE** file located on the "G-Series Documentation and Software" CD ROM (part no. 550971). This software can also be downloaded from <http://www.products.mtlinearsensors.com>.

Figure 2 - Hardware Connections for the PC Setup Software



Hardware Setup Notes:

1. A converter is required to communicate via the PC's serial (RS-232) port. The serial interface converter must be configured for RS-232 to RS-422 communication for the Digital Pulse output sensors, or for RS-232 to RS-485 communication for the Analog output sensors.
 - **Digital-pulse output sensors** - Set the dipswitches on the top of the converter such that "422" and "Echo On" are selected for full duplex RS-232 to RS-422 communication.
 - **Analog output sensors** - Set the dipswitches such that "485" and "Echo Off" are selected for half-duplex RS-232 to RS-485 communication.
2. Connect the DB9 communication cable from the PC to the serial interface converter.
3. Make sure sensor is NOT connected to the control or sensor interface. Connect sensor and converter as shown in *Table 6* below.
4. Serial PC communication can only be accomplished if the sensor is powered. Before applying power to the sensor make sure that the appropriate power source and ground are connected as indicated in *Tables 1-3* on page 2.

Table 6 - G-Series to Serial Interface Converter Wiring

D60 pin no.	Wire color	Function - Digital-pulse outputs	PN 380077 Converter Set for RS-422	Function - Analog outputs	PN 380077 Converter Set for RS-485
1	Gray	(-) Gate for PWM (-) Stop for Start/Stop or Programming (RS-422)	(-) Receive "RD A (-)"	Analog output	No connection
2	Pink	(+) Gate for PWM (+) Stop for Start/Stop or Programming (RS-422)	(+) Receive "RD B (+)"	Return for pin 1	No connection
3	Yellow	(+) Interrogation for PWM (+) Start for Start/Stop or Programming (RS-422)	(+) Transmit "TD B (+)"	Programming (RS-485+)	(+) Txd/Rxd "TD B (+)" [Add jumper to "RD B (+)"]
4	Green	(-) Interrogation for PWM (-) Start for Start/Stop or Programming (RS-422)	(-) Transmit "TD A (-)"	Programming (RS-485-)	(-) Txd/Rxd "TD A (-)" [Add jumper to "RD A (-)"]
5	Red or Brown	Supply voltage (+Vdc) connect to power supply	No connection on converter box	Supply voltage (+Vdc) connect to power supply	No connection on converter box
6	White	DC ground connect to power supply	No connection on converter box	DC ground connect to power supply	No connection on converter box

Establishing PC Serial Communication

Caution:

Prior to initiating G-Series programming, it is critical that the user ensures that taking the sensor out of normal operating mode or modifying the sensor's operating parameters will not cause harm to the process utilizing the G-Series sensor feedback, nor to any persons associated.

Complete the following steps to establish PC serial communication:

1. Turn sensor power ON. Without prompting from the PC Setup program, the sensor will operate normally and the LED display will indicate the appropriate normal operation (see *LED Codes, Table 4 on page 3*).
2. With the sensor powered, execute the G-Series Setup program; click **G-Series Field Setup** shortcut on your desktop or in the **"MTS Sensors" Startup menu**. If the serial port detected is correct, the program will *automatically initiate serial (PC) programming mode* and the sensor LEDs should flash GREEN only. If there is a communications error, a dialog will appear giving you the options to "Abort", "Retry" or "Ignore" the error. If the user is confident the wiring and power to the sensor are correct, click the **Ignore** button and the correct communications port from the dialog that immediately follows. This dialog can also be accessed by selecting **Communications** on the main menu bar and then clicking on **Select COM port**
3. Normal sensor operation is resumed by either shutting down the setup program or by cycling power to the sensor.
4. Note that normal operation mode will occur when sensor power is cycled even when the G-Series setup program is running. The program must prompt the sensor before programming mode is initiated. This occurs when the program is first executed or by selecting the **Click Here to Refresh Data** at the bottom of the page or by pressing **F5**.

Refer to the G-Series PC setup software Help file for details on advanced programming and diagnostic features.

Programming & Diagnostics Using a PDA - G-Series Digital Pulse Output Sensors Only.

Using the G-Series infrared (IR) interface, users can program G-Series digital-pulse sensors using a Personal Digital Assistant (PDA). The PDA interface can also be used as a monitor for position feedback as well as diagnostics.

Required Equipment:

- G-Series model sensor
- Mating cable for sensor (if necessary)
- Palm™ OS based PDA and G-Series PDA configuration software installed (see below)
- Sensor power supply (+20.4 to +28.8 Vdc for input voltage option 1, and +9 to +23 Vdc for option 2)

The required software file for G-Series PDA programming is named *MTS_GSeries.prc*.

Software can be found on “G-Series Documentation and Software” CD ROM (part no. 550971) or downloaded from <http://www.products.mtslinearsensors.com>. **This software is compatible with Palm OS version 3.3 and above, with these Palm models only: Palm III, IIIc, V, m100, m130, and Zire.** To load the software to your PDA, select the program for installation and synchronize the PDA with your PC.

Hardware Setup Notes:

1. Make sure sensor is NOT connected to the control or sensor interface.
2. Do not apply power to the sensor yet. However, make sure that the appropriate power source and ground connections are correct as indicated in *Tables 2 or 3* on page 2.

Establishing PDA Communications

Caution:

Prior to initiating G-Series programming, it is critical that the user ensures that taking the sensor out of normal operating mode or modifying the sensor's operating parameters will not cause harm to the process utilizing the G-Series sensor feedback, nor to any persons associated.

Use of the G-Series IR programming tools requires a clear path from the programming device to the sensor LEDs. Depending on the PDA device used, IR communication with the sensor may be limited to 3 inches (75 mm) from the LED window.

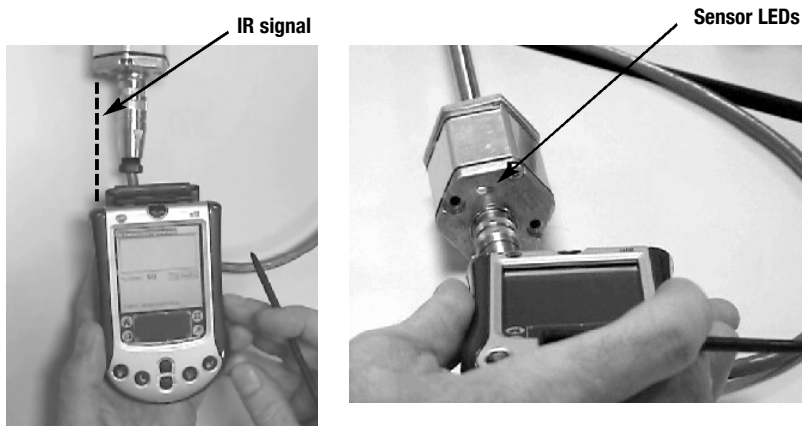
1. Turn the PDA on, (power should not yet be applied to the sensor). Select **MTS G-Series** from the main PDA menu.
2. Align the IR window of the PDA device with the LED window of the sensor as shown in Figure 3 below. Select **Begin Prog** then immediately apply power to the sensor. The LED on the sensor will flash red only when IR communications is established within the 5 seconds of applying power to the sensor (see *Figure 3* below).

3. If IR communication is not established before the timeout period, simply power the sensor down and begin step 2 again.

Note:

Once the PDA IR “Begin Program” input is received, the sensor will enter and remain in program mode until this mode is exited or the sensor power is cycled.

Figure 3 - Establishing PDA Communications

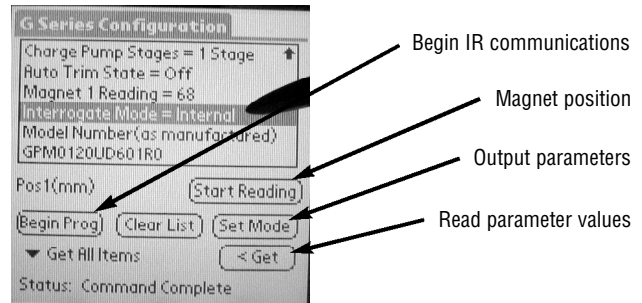
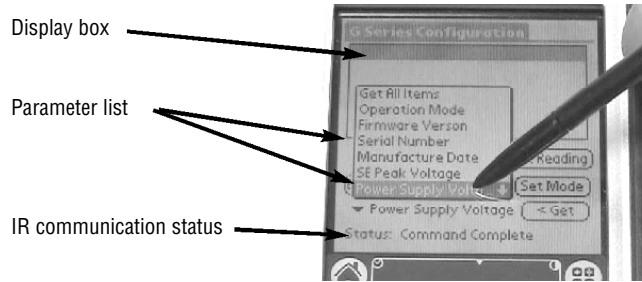


Reading Sensor Parameters (See Figure 4)

Using the PDA configuration program it is possible to read the sensor parameters listed in Appendix A on page 8. To view these parameters or status variables, in the PDA screen select **Select Items Here** (just under the **Begin Prog** button) and select one of the *individual parameters* on the scrolling list. To view the parameter select the **< Get** button.

For a complete parameter listing, click the **Get all Items** button and then click the **< Get** button and all the parameters and their values will stream across the program display box. To scroll through the list, tap the up and down arrow keys on the right of the screen. The PDA screen can be cleared of all parameters by clicking the **Clear List** button.

Figure 4 - Selecting Sensor Parameters

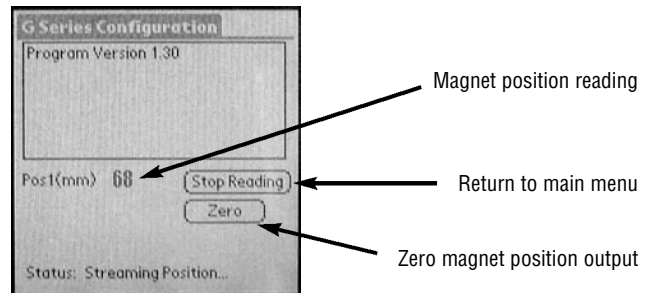


Reading Magnet Position (See Figure 5)

The approximate magnet position can be displayed (in mm) to help with sensor setup, or during troubleshooting of a system installation. *The values displayed are for diagnostic purposes and are NOT representative of the resolution or performance of the G-Series sensor.* The PDA has a 3 second update time for displaying magnet position.

1. To read magnet position, click the **Start Reading** button from the main G-Series Configuration screen. The magnet position will appear on the PDA screen.
2. To exit this mode, click the **Stop Reading** button.

Figure 5 - Reading Magnet Position



Set (Programming) Mode (See Figure 6)

The Set Mode command is used to program the Digital Pulse output sensor parameters.

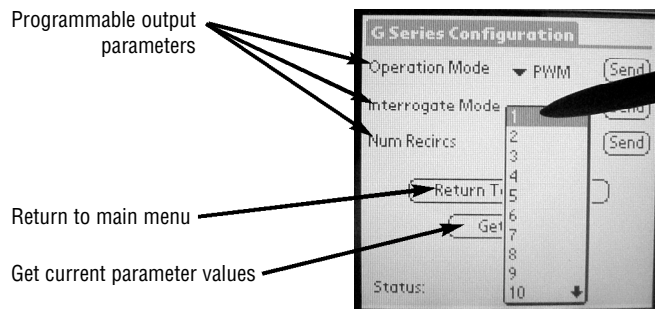
1. From the main G-Series Configuration screen, select **Set Mode**. If the PDA is properly aligned for IR communication, the current output parameter values will be displayed. If not, position the PDA for IR communication and select **Get Mode Params**.

To modify the output parameters simply select the pull-down menus and select the desired parameter values. Use the down arrow on the right to view all parameter values available for the following items:

- Output Mode – Start/Stop or PWM
- Interrogation Type – External or internal interrogation for PWM mode
- Number of recirculations for PWM mode (1 to 15)

2. Once finished with parameter selection, save settings to the sensor by selecting **Send** to the right of the mode parameter menu. The "Status" line at the bottom of the screen will display "Command Complete" when changes have been successfully applied to the sensor.
3. To exit the Set Mode, click the **Return to Get Mode** button to return to the main menu. Power to the sensor must be cycled for mode changes to take effect. If changes are not saved prior to removing sensor power, the parameters will revert to their last saved values.

Figure 6 - Using Set Mode



Setpoint Programming with the Infrared Setpoint Programmer - G-Series Analog Output sensors only

Using the MTS IR Setpoint Programmer it is possible to adjust the G-Series Analog sensor output at the ends of stroke for the Null (Setpoint 1) and Span (Setpoint 2).

Required Equipment:

- G-Series model sensor
- Mating cable for sensor (if necessary)
- IR Setpoint Programmer (part no. 380078)
- Sensor power supply (+20.4 to +28.8 Vdc for input voltage option 1, and +9 to +23 Vdc for option 2)
- Voltmeter or Ammeter (depending on output)

Setpoint Programming

Caution:

Prior to initiating G-Series programming, it is critical that the user ensures that taking the sensor out of normal operating mode or modifying the sensor's operating parameters will not cause harm to the process utilizing the G-Series sensor feedback, nor to any persons associated.

For G-Series Analog sensors, the Null (Setpoint 1) value applies to the output at the beginning of the measurement stroke nearest the sensor's electronics housing. The Span (Setpoint 2) value applies to the output at the opposite end, nearest the sensor's dead zone. For the G-Series model configuration analog sensor output codes (e.g. V0 = 0 to 10 Vdc), the first value always refers to the Null (Setpoint 1) output, (See *Note 1*).

1. Hold the IR Setpoint Programmer with the front facing the sensor LEDs, no more than 4 inches (100 mm) away without obstruction. Press and hold the programmer's **POWER** button and then apply power to the sensor. Once the sensor receives the IR programming command, it will respond with a continuously flashing red LED. If the sensor does not enter IR programming mode, power down the sensor and repeat this step again.
2. Programming inputs are made by pressing AND releasing the programmer's buttons while the device is directed at the sensor LEDs. When a valid input from the programmer is received and processed by the sensor, it will display two green LED flashes (see *Note 2*). To adjust the sensor setpoints follows the steps below.
3. Move the position magnet to the desired Null (setpoint 1) position. Then select the **+** or **-** button below the "NULL (SP1)" label to increase or decrease the output as shown on your meter. Select the **COARSE** or **FINE** (1 or 2) buttons for larger or smaller adjustments (See *Note 1*).
4. Next move the position magnet to the Span (setpoint 2) position and select the **+** or **-** button below the "SPAN (SP2)" label to increase or decrease the output.
5. Return the position magnet to the null and span locations and confirm that the outputs are as expected. Use the FINE adjustment feature if necessary.
6. The new setpoint values will remain active until the sensor is powered down. To save the adjustments to sensor memory, click the **SAVE** (Enter) button. Otherwise, the sensor will revert to the last saved values prior to power down. During programming to recall the last saved values, click the **RECALL** (5) button.

Note: A second button labelled "Recall" resides at the lower left side of the programmer. It has no effect for setpoint programming.

7. Power to the sensor must be cycled to exit the IR setpoint programming mode.

Hardware setup notes:

1. Make sure sensor is NOT connected to the control or sensor interface.
2. Do not apply power to the sensor yet. However, make sure that the appropriate power source and ground connections are correct as indicated in *Table 1* on page 2.
3. Connect your voltmeter or ammeter to the sensor output and output return signals as shown in *Table 1* on page 2.

Figure 7 - Infrared Adjustment Tool



Notes:

1. G-Series Analog sensor outputs are adjustable over the entire sensor span. The minimum adjustment increment is 0.015 inch (0.35 mm) and the minimum spacing between null and span is 1 inch (25 mm). Do NOT attempt to reverse the output polarity of the G-Series sensor by adjusting the setpoint values. (To change the output polarity use the PC Setup Software to program the sensor for a different output range.)
2. The sensor will continue to receive and process valid inputs when the programmer's buttons are pressed and held down even after displaying the two green LED flashes. However, when processing this streaming input signal from the programmer, the sensor will not provide additional feedback, (i.e. no additional two green LED flashes). Also, there will be no voltage or current changes on the output until the programmer's button is released.

Appendix A

G-Series Sensor Parameter Definitions

1. **Output style (operation mode)** – The operation modes for the digital pulse type sensors can be start/stop output or PWM output. For analog type sensors, the operation mode can be voltage or current output.
2. **Interrogation type (mode)** – Indicates whether the sensor interrogation is generated internally by the sensor hardware or externally by the controller interface.
3. **Circulations (commonly referred to as recirculations)** - Circulations are the number of times that the sensor element is interrogated to produce a position reading. By using multiple circulations strung together under one internal time measurement, the effective resolution of the controller's clock is increased, thereby increasing position measurement resolution. The additional interrogations also increase the sensor's update time proportionally.
4. **Sensor firmware version** – The version of firmware inside the sensor.
5. **Serial number** – The serial number of the sensor as originally produced.
6. **Gradient** – The gradient is the inverse of the rate at which a sonic strain pulse propagates through the magnetostrictive waveguide, (gradient values are about 9 $\mu\text{s}/\text{inch}$ or 0.35 $\mu\text{s}/\text{mm}$). The sensor interface hardware used determines the absolute position of the magnet by dividing the difference in time between the Start signal and Stop signal by the gradient.
7. **Cycle time** – The cycle time is the amount of time necessary to perform one internal measurement cycle of the sensor.
8. **Manufacture date** – The date the sensor was originally produced.
9. **Automatic threshold** – Refers to sensor circuitry capable of automatically adjusting to a specific position magnet.
10. **SE threshold voltage / Digital threshold level** – The voltage level at which the return signal will be detected.
11. **Supply voltage** - The input voltage detected by the sensor. Refer to the sensor model number for the sensor's allowed input voltage range.
12. **Charge pump stages** – Circuits responsible for generating the interrogation current applied to the waveguide.
13. **Coil reflection mode** – Refers to a specific method of generating sensor output signals. Reserved for an existing OEM interface.
14. **Sensor model number (as manufactured)** – “Boxcar” model configuration of the sensor as originally manufactured.

G-Series LED Diagnostic Code Definitions

1. **Missing (external) interrogation** - If the sensor is a Start/Stop or PWM output style, with external interrogation, then no interrogation signal has been received over the timeout period. Standard timeout is 0.5 seconds.
2. **Magnet signal weak** - Sensor is still operating, but magnet placement should be corrected to assure continued operation. (May also indicate other problems that cause weak magnet return signals.)
3. **Power out of range (high or low)** - Supply voltage is nearly beyond the acceptable limits. If voltage is low the sensor is still operating, but the supply voltage should be corrected to assure continued operation. If the voltage is high the sensor is still operating, but the sensor's over-voltage protection may engage, powering off the sensor temporarily. The over-voltage should be corrected to assure continued operation and avoid possible permanent damage.



UNITED STATES
MTS Systems Corporation
Sensors Division
3001 Sheldon Drive
Cary, NC 27513
Tel: 800-633-7609
Fax: 919-677-0200
800-498-4442
www.mtssensors.com
displacement@mtssensors.com

GERMANY
MTS Sensor Technologie
GmbH & Co. KG
Auf dem Schüffel 9
D - 58513 Lüdenscheid
Tel: +49 / 23 51 / 95 87-0
Fax: +49 / 23 51 / 56 491
www.mtssensor.de
info@mtssensor.de

JAPAN
MTS Sensors Technology
Corporation
Ushikubo Bldg.
737 Aihara-cho, Machida-shi
Tokyo 194-0211, Japan
Tel: + 81 (42) 775.3838
Fax: + 81 (42) 775.5512
www.mtssensor.co.jp
info@mtssensor.co.jp

Part Number: 09-04 550966 Revision B

Temposonics is a registered trademark of MTS Systems Corporation.

All other trademarks are the property of their respective owners.

All Temposonics sensors are covered by US patent number 5,545,984. Additional patents are pending.

Printed in USA. Copyright © 2004 MTS Systems Corporation. All Rights Reserved.